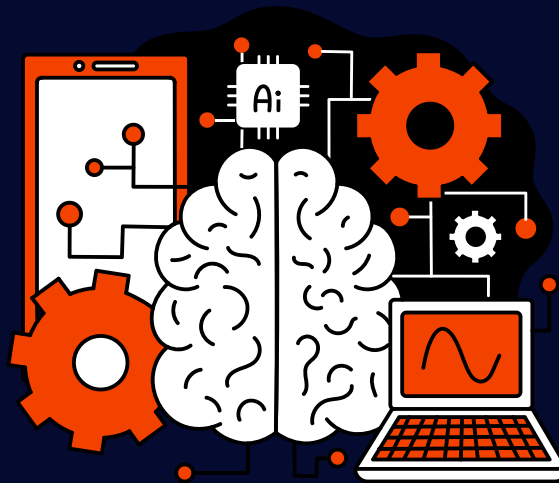


# Modules

- ➔ Basic (Financial Accounting)
- ➔ Ticketing Module
- ➔ IATA Module
- ➔ Cost Centre Module
- ➔ Visa Module
- ➔ FFMC Module (Only for Indian Clients)
- ➔ Tour Module
- ➔ Multi Currency Module
- ➔ Document Signer ( Digital Signature)
- ➔ GDS Data Capture Module
- ➔ GST E Invoice API
- ➔ GSTR API
- ➔ SMS Module
- ➔ DMS (Document Management System)
- ➔ Online Portal Integration
- ➔ Branch Module
- ➔ Multiuser Mobile App
- ➔ Customer Self Service Module

## TALK TO US

+91 404 514 5570 (Hyderabad)  
+91 767 407 0366 (Kerala)  
+91 879 027 0366 (Chennai)  
+91 834 107 0366 (Kolkata)  
[sales@calico.in](mailto:sales@calico.in)



## FinBook Features

- ➔ SAAS Model on Cloud
- ➔ Deploy Once, Access Anywhere
- ➔ Multi Device Access
- ➔ More Customer Engagements
- ➔ Web API / Whatsapp API
- ➔ UPI API / GST API
- ➔ 2 Factor Authentication
- ➔ Restricted Network Access



# FinBook

Desktop Meets Cloud

## Travel Accounting software

[www.calicosys.com](http://www.calicosys.com)

# Air Travel Accounting Software Features

## Technical Features

- ➔ Built For Cloud & Available on SAAS Model , Virtual Private Cloud
- ➔ Developed in Java Enterprise Edition (JEE) Framework
- ➔ Hosted on AWS Cloud in India Region
- ➔ Auto scaling & Multi Zone Availability for 99.999 uptime.
- ➔ Platform Independent. Support Windows,Mac, Linux Operating systems
- ➔ Client – Server Communication through SSL
- ➔ Integrated SMS API

## Software Features

- ➔ Account Heads can be created any time for any accounting year, ie. you can create Accounts Heads in the Previous Year even after transferring balances to the Next Year.
- ➔ Multi Window operation mode
- ➔ User Defined Function Keys
- ➔ Online Real-time integration of data from your web portal
- ➔ CRS data integration with Abacus, Amadeus, Farelogix, Galileo, Sabre & Worldspan systems
- ➔ User Defined Home Screen Short Cuts
- ➔ Most calculations like Airline Commissions, Service Tax, TDS, etc. are User Defined and Date Specific
- ➔ Extracting XO Email and link with Invoice more transparency.

- ➔ Sub-ledgers can be created for any Master Account. Opening Balances can be updated for each Sub-ledger account and also Bill-wise Opening Amounts can be updated.
- ➔ Account Posting for every Invoice / Credit Note can be viewed as a Journal Entry
- ➔ TDS receivable from Airline / Supplier is posted Sub-Ledger-Wise for every Airline / Supplier
- ➔ Updating Sales entries automatically updates the Purchase entry also, including the calculation of Service Tax Liability. Every entry immediately updates all Master Balances, so you can view the Trial Balance, Profit/Loss, etc. instantly.
- ➔ Create your own series for Invoices, Credit Notes, Receipts, etc.
- ➔ Automatic creation of New Year Directory and transfer of all balances and un-adjusted invoices, credit notes, etc.
- ➔ Uniformity in all Data Entry Screens, so less time spent on training your staff for different modules.
- ➔ In Built Document Management Systems (Can upload and link documents against any transactions , eg supplier bills,Expense Bills, Pax Passport copies etc.)
- ➔ Multi Level Approval system with Amount Trigger.
- ➔ In Built Calendering & Reminder Feature for recurring Transactions (Can be integrated with Google Calender)

## Misc. Module Features

- ➔ This module allows you to make invoices for any & every type of service / product you deal in
- ➔ Along with the Sales account, the Purchase is also updated instantly.
- ➔ You can feed different Basic Amount for Sales (Client part) and Purchase (Supplier part). All subsequent calculations are based on these 2 Basic Amounts only.
- ➔ You can provide for different Currency for Sales (Client part) and Purchase (Supplier part).

- ➔ While booking Misc. Purchase for Rent, etc., you can deduct TDS and pay only the balance amount to the Supplier
- ➔ TDS deducted by Clients can be directly marked in the invoice itself.

## GDS Interface Features

- ➔ GDS Interface processes all existing GDS present in your country. Opting for this module makes all GDS interface available to you.
- ➔ In case the PNR is created with special Remarks, this PNR will be automatically invoiced while running the Interface option. No Human Interference required.
- ➔ GDS integration ensures 100% efficiency in data entry, which directly results in 100% accurate reports and analysis. Most manual data entry operators DO NOT feed flight details.
- ➔ Data Entry operators complete more work per shift as most data entry details are picked up automatically.

## Online Portal Integration Features

- ➔ Instantly update your accounts database with the Air Ticket issued on your web portal
- ➔ A separate Invoice Series is maintained for Online Transactions.
- ➔ Not only are the accounts updated, but the Invoice can also be emailed to the client.
- ➔ Misc. Transactions can also be integrated using the feature.
- ➔ Receipts captured online can also be integrated.

## Cost Center Features

- ➔ Cost Center is provided to identify every Location from which you transact.
- ➔ Separate Cost Center Master is provided to identify every Cost Center which is responsible for this transaction.
- ➔ All reports can be generated based on Cost Center giving you vital statistical insight into the performance of every such Cost Center.